

No.7. I have a song to sing, O!

Duet

Elsie and Point

*sit in group (2 of us!) up left*Allegro con brio $\text{♩} = 96$

Piano introduction in B-flat major, 4/4 time. The music features a melody in the right hand and a bass line in the left hand. The tempo is marked 'Allegro con brio' with a quarter note equal to 96 beats per minute. The introduction consists of five measures. The first measure has a treble clef, and the subsequent measures have a grand staff. The piano part is marked with a 'p' (piano) dynamic.

Red. *Red.* *Red.*

Point's first line of music. The melody is in the treble clef, and the piano accompaniment is in the grand staff. The tempo is marked 'Allegro con brio'. The music is in B-flat major. The lyrics are 'I have a song to sing, O!'. There is a circled 'A' above the first measure of the melody. Handwritten numbers '1 2 123' are above the notes. A circled '1' is above the final note. The piano part is marked with a 'p' (piano) dynamic.

Red. *Red.* *

Elsie and Point's second line of music. Elsie's melody is in the treble clef, and Point's melody is in the treble clef. The piano accompaniment is in the grand staff. The tempo is marked 'Allegro con brio'. The music is in B-flat major. The lyrics are 'Sing me your song, O!' for Elsie and 'It is' for Point. The piano part is marked with a 'p' (piano) dynamic.

Red.

craved no crumb, As he sighed for the love of a la - dye.

soul was sad, and whose glance was glum, Who sipped no sup, and who

throng, O! It's the song of a mer-ry-man, mop - ing mum, Whose

sung to the moon By a love - lorn - loon, Who fled from the mock - ing

Heigh - dy! Heigh - dy! Mis - e - ry me, lack - a - day - dee! He

pp

*

sipped no sup, and he craved no crumb, As he sighed for the love of a la - dye!

Ped.

(B) Elsie

I have a song to sing, O!

Ped.

Point Elsie

What is your song, O? It is sung with the ring Of the

Ped.



soul was sad, and whose glance was glum, Who sipped no sup, and who



laughed a - loud At the moan of the mer-ry-man, mop - ing mum, Whose



song of a mer-ry-maid, peer - ly proud, Who loved a lord, and who



songs maids sing Who love with a love life - long, O! It's the

craved no crumb, As he sighed for the love of a la - dye!

Lead

Heigh - dy! heigh - dy! Mis - e - ry me, lack - a - day - dee! He

*

sipped no sup, and he craved no crumb, As he sighed for the love of a la - dye!

Lead

(C) Point

I have a song to sing, O!

no rest

turned up his no - ble nose with scorn At the hum - ry-maid,

dong, Oi Its a song of a pop - in - jay, brave - ly born, Who

sung to the knell Of a church - yard - bell, And a dole - ful dirge, ding

Sing me your song! Oi
It is
Point

peer - ly proud, Who loved a lord, and who laughed a - loud At the

Ped.

moan of the mer - ry - man, mop - ing mum, Whose soul was sad, and whose

Ped.

glance was glum, Who sipped no sup, and who craved no crumb, As he

Ped.

sighed for the love of a la - dy! Heigh - dy! Heigh - dy!

Ped.

Sing me your song, Oi It is

Point

Elsie

I have a song to sing, Oi

Elsie

craved no crumb, As he sighed for the love of a la - dye.

Mis - e - ry me, lack - a - day - dee! He slipped no sup, and he

sung with a sigh And a tear in the eye, For it tells of a right-ed

wrong, O! It's a song of the mer-ry-maid, once so gay, Who

turned on her heel and tripped a-way From the pea-cock pop-in-jay,

brave-ly born, Who turned up his no-ble nose with scorn At the

craved no crumb, As he sighed for the love of a la - dy!

soul was sad and whose glance was glum, Who sipped no sup, and who

down - cast eyes, For the love of the mer - ry - man, mop - ing mum, Whose

hum - ble heart that he did not prize; So she begged on her knees, with

E Elsie and Point



1st SOPRANOS



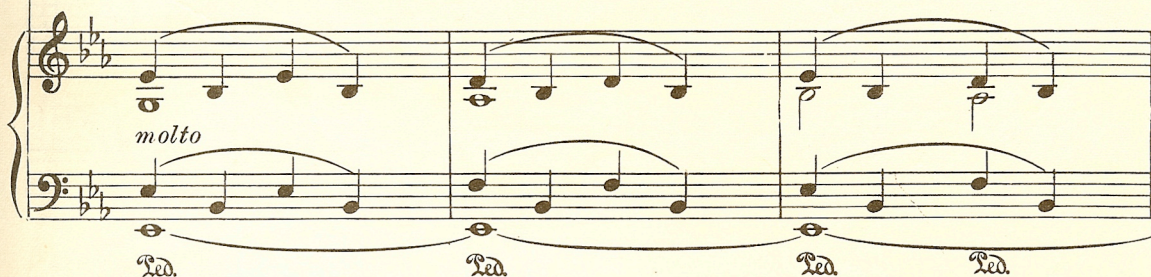
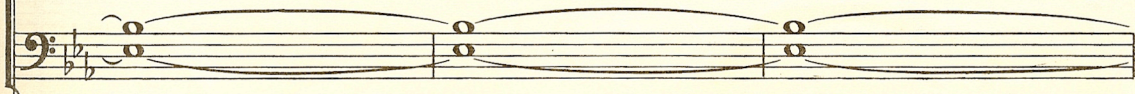
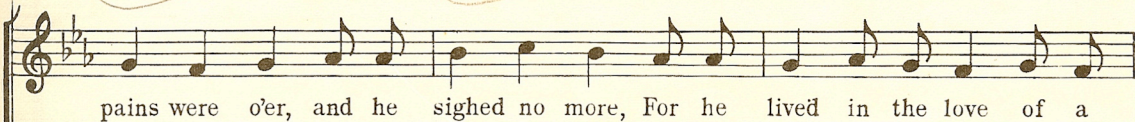
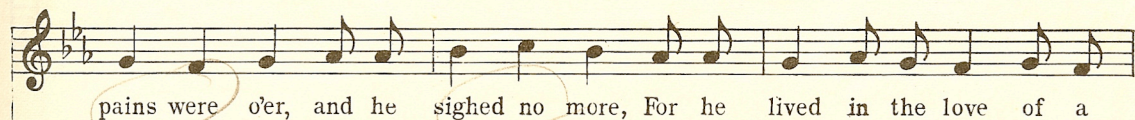
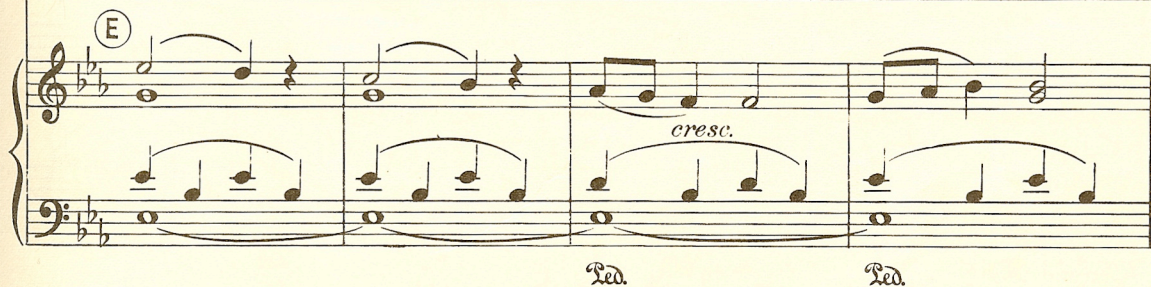
2nd SOPRANOS

cresc.



TENORS & BASSES

cresc.



lack - a - day - a - dee! His pains were o'er, and he sighed no more, For he

cresc.

la - dy! Heigh - dy! Heigh - dy! Mis - e - ry me,

f

Ahi

Ahi

la - dy! Heigh - dy! Heigh - dy! Mis - e - ry me,

f

Down left
point right
up left
at left at right

lived in the love of a la - dye! _____

lived in the love of a la - dye! _____

ff

A handwritten musical score for the song 'The Rose Tree'. The score is written on five staves. The first four staves are for individual voices (Soprano, Alto, Tenor, Bass), each starting with a treble clef and a key signature of two flats (B-flat and E-flat). The fifth staff is for the piano accompaniment, featuring a grand staff with a treble and bass clef. The melody is written in a simple, folk-like style with many whole and half notes. The lyrics 'The Rose Tree' are written below the piano staff. The score is on aged, yellowed paper.